



MONTHLY MEMBERSHIP PROGRESS REPORT

District 19 A

Results as of: 5/31/2016

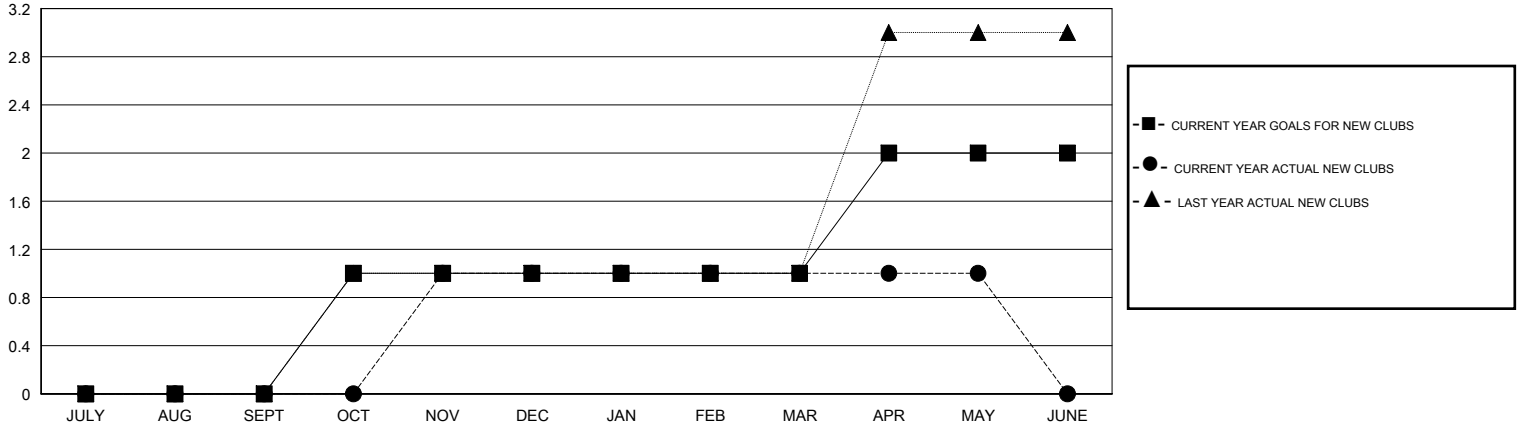
GMT: DENNIS STEVENSON

LOCATION BRITISH COLUMBIA

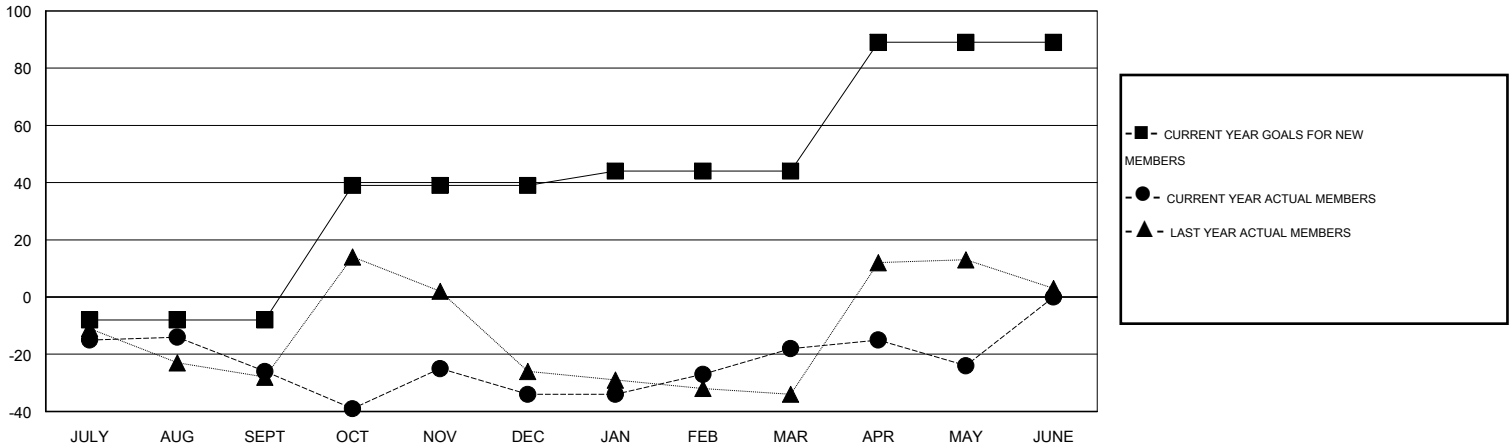
GMT CA 2

Clubs					Members				
RESULTS FOR 2015-2016					RESULTS FOR 2015-2016				
QUARTER	NEW CLUB GOAL	NEW CLUBS	DROPPED CLUBS	NET GAIN/LOSS	QUARTER	NEW MEMBER GOAL	CHARTER AND NEW MEMBERS ADDED	DROPPED MEMBERS	NET GAIN/LOSS
JULY/AUG/SEPT	0	0	1	-1	JULY/AUG/SEPT	-8	58	84	-26
OCT/NOV/DEC	1	1	1	0	OCT/NOV/DEC	47	47	55	-8
JAN/FEB/MAR	0	0	0	0	JAN/FEB/MAR	5	35	19	16
APR/MAY/JUNE	1	0	0	0	APR/MAY/JUNE	45	21	27	-6

GOALS AND ACTUAL NEW CLUBS CUMULATIVE



GOALS AND ACTUAL MEMBERS CUMULATIVE



DROPPED CLUBS: 2	36 CLUBS OF 62 ADDED 1 OR MORE NEW MEMBERS	<u>GENDER DISTRIBUTION</u>	
		MALE	657 (56.39%)
<u>DROPPED MEMBERS</u>	CLICK HERE FOR HEALTH ASSESSMENT DATA	FEMALE	508 (43.61%)
DECEASED		4	FAMILY UNIT MEMBERS
CLUB CANCELLED	9	HEAD OF HOUSEHOLD	36
OTHER	172	NON-HEAD OF HOUSEHOLD	37
TOTAL	185		